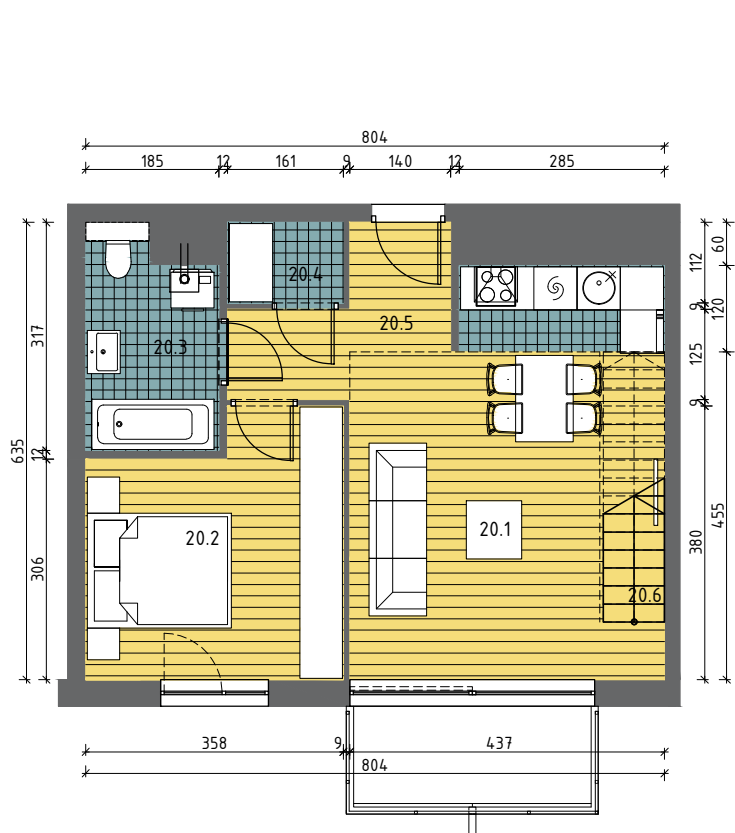
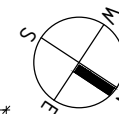


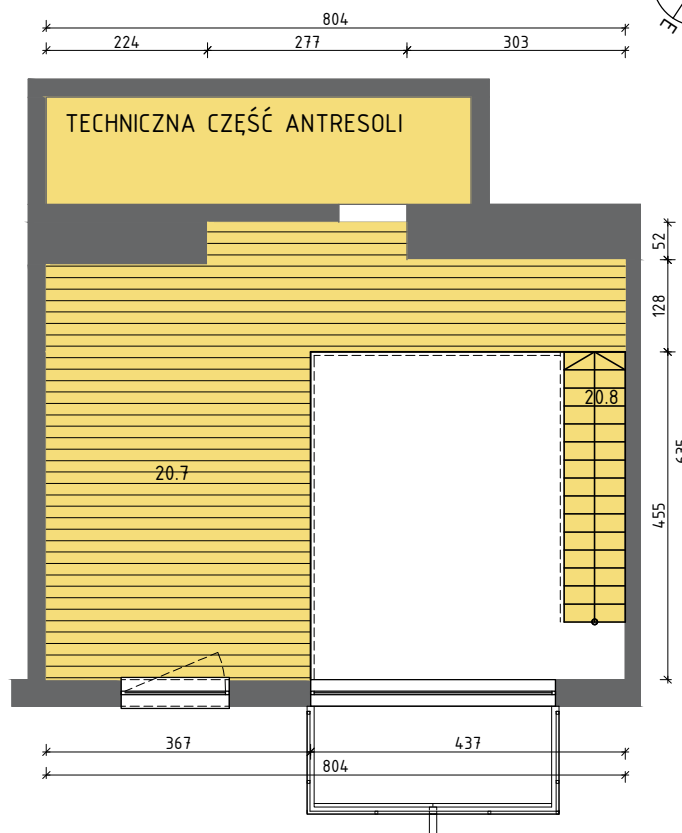
ZAŁĄCZNIK NR DO UMOWY NR

BUDYNEK WIELORODZINNY NR 1, KATOWICE, UL.MALINOWA / ASNYKA

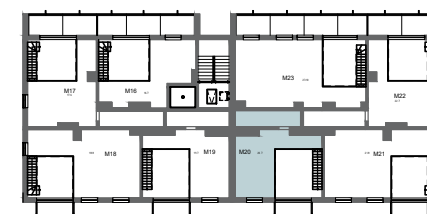
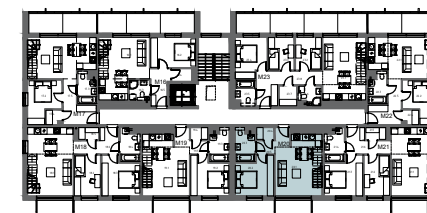


II piętro

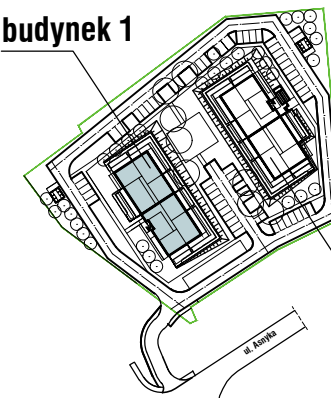
BUDYNEK 1, MIESZKANIE M20



antresola



budynek 1



budynek 2

MIESZKANIE M20	
20.1. SALON +AN.KUCHENNY	20,22m ²
20.2. POKÓJ	12,00m ²
20.3. ŁAZIENKA	5,18m ²
20.4. POM. GOSP.	1,75m ²
20.5. PRZEDPOKÓJ	5,46m ²
20.6. SCHODY	1,46m ²
RAZEM	46,07m²

20.7. ANTRESOLA	28,07m ²
20.8. SCHODY	1,67m ²
RAZEM	29,74m²

pow. mieszkania M20 75,81m²

