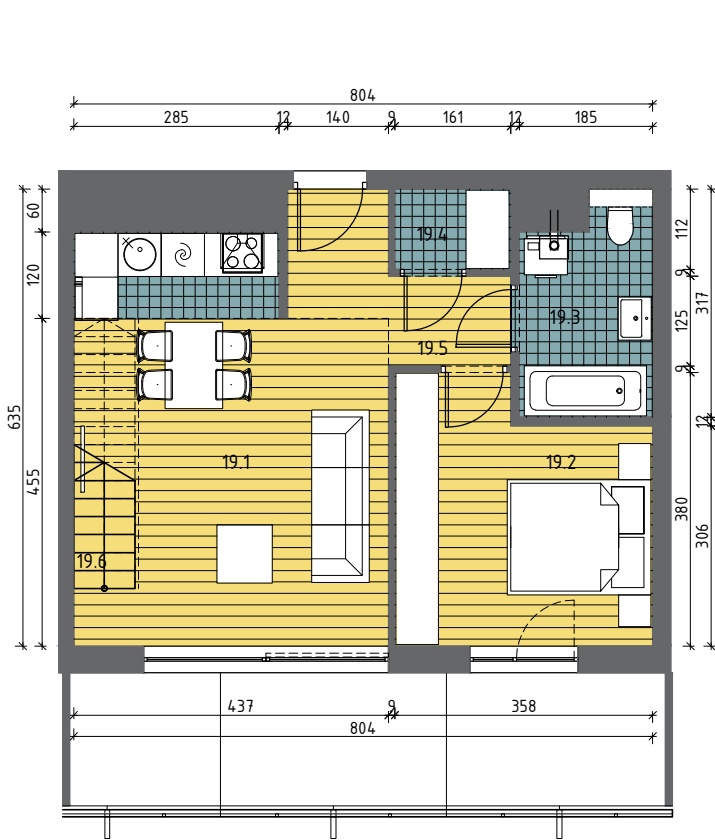
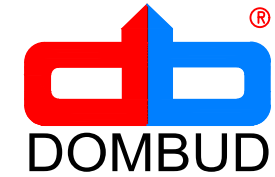
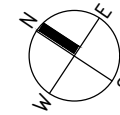
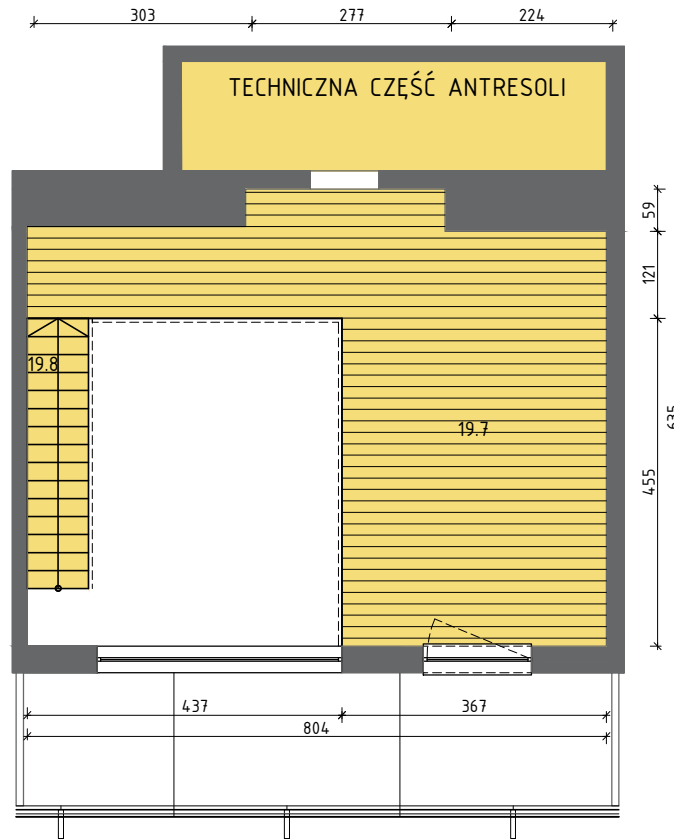


# ZAŁĄCZNIK NR DO UMOWY NR

## BUDYNEK WIELORODZINNY NR 2, KATOWICE, UL.MALINOWA / ASNYKA



II piętro



antresola

### BUDYNEK 2, MIESZKANIE M19

MIESZKANIE	M19	
19.1.	SALON + AN.KUCHENNY	20,22m <sup>2</sup>
19.2.	POKÓJ	12,00m <sup>2</sup>
19.3.	ŁAZIENKA	5,18m <sup>2</sup>
19.4.	POM. GOSP.	1,75m <sup>2</sup>
19.5.	PRZEDPOKÓJ	5,46m <sup>2</sup>
19.6.	SCHODY	1,46m <sup>2</sup>
	<b>RAZEM</b>	<b>46,07m<sup>2</sup></b>

19.7.	ANTRESOLA	28,07m <sup>2</sup>
19.8.	SCHODY	1,67m <sup>2</sup>
	<b>RAZEM</b>	<b>29,74m<sup>2</sup></b>

pow. mieszkania M19 75,81m<sup>2</sup>)

